

The image shows the exterior of a three-story brick building housing The Liverpool School of English. The building features a central arched doorway with a black door and a white surround, flanked by windows with white frames and flower boxes. A large blue sign with white text is mounted above the entrance. The sign reads "THE LIVERPOOL SCHOOL OF ENGLISH" in a large, serif font. Below this, in a smaller font, are the contact details: "Tel: 0151 706 0730 • Email: info@lse.uk.net • Web: www.lse.uk.net". To the right of the sign is the logo for "ENGLISHUK", which includes a stylized 'E' and 'U' and the text "ENGLISHUK". The building is surrounded by lush greenery, including a large bush on the left and various flower boxes and planters with pink and purple flowers in front of the entrance. A black metal railing runs along the sidewalk in front of the building.

THE LIVERPOOL SCHOOL OF ENGLISH

Tel: 0151 706 0730 • Email: info@lse.uk.net • Web: www.lse.uk.net



# The Liverpool School of English

ADULT & JUNIOR COURSES

# Liverpool The Perfect Study Destination

Liverpool is famous for its friendly people, history, architecture, sports and music! Our waterfront is a UNESCO world heritage site and we have more art galleries, museums and parks than any other city outside of London.

## Liverpool World Museum

(10 minutes from school) – The World Museum has four floors of interesting exhibitions from the planetarium, dinosaurs and ancient civilizations to world culture.



## Liverpool Central Library

(10 minutes from school) – The newly refurbished central library has three floors of books and computers. There is even a small gallery of old books and a relaxation area where you can play games!



## St George's Hall

(10 minutes from school) – It was originally built in the 1800s as a concert hall and a space for civil and crown courts. It is a fine example of a neo-classical building that now hosts exhibitions, talks and tours.

## Liverpool Football Club

(20 minutes from school) Anfield Stadium is the home of Liverpool Football Club. You can come and watch football matches in this legendary stadium or go on the stadium tour and learn about the amazing history of the club.

## Mathew Street

(10 minutes from school) – This is the home of music in Liverpool. Come and see The Cavern Club and the musical wall of fame, or take a picture with John Lennon's statue.

## Liverpool One Shopping

Centre (10 minutes from school) – The Shopping Centre is one of Liverpool's newest attractions. Here you can shop in hundreds of unique stores in comfort and style.

## Liverpool Lime Street Station

(5 minutes from school) – Lime Street station was built in 1836 to connect Liverpool and Manchester. Now you can travel all over the country from this station; it only takes 2 hours to get to London.



**Beatles Story** (15 minutes from school) – People come from all around the world to visit the Beatles Story Museum and relive the magic of the fab four!

## Albert Dock & Waterfront

(15 minutes from school) - The Albert Dock is one of Liverpool's most popular attractions. As well as seeing some beautiful boats there is also The Maritime Museum, The Beatles Story, The Tate Gallery and much, much more!

“ In my opinion, the school was very important to learn English and also help me to know a lot of people. All of the staff were very funny and able to help me. I'll miss Liverpool and also, of course, The Liverpool School of English!! ”

**Hiroki from Japan**





Learn, Succeed and Enjoy

The Liverpool School of English  
**Adult Courses**

THE LIVERPOOL **SCHOOL OF ENGLISH**

# General English

**Our General English course is based on the methods that suit learners best!**

On this course you will get plenty of practise speaking, listening, reading and writing in English, as well as help with vocabulary, grammar and pronunciation, using carefully chosen course materials from established publishers and complimentary materials.

We use the communicative language approach and task based learning to ensure that you will get practical English knowledge and all the tools to enhance your English language skills.

Outside the classroom you can use the LSE-Learning online platform to improve your English. You can also attend three free support classes per week to improve particular parts of your English.

## COURSE DETAILS



**Course starts:** Any Monday

**Levels:** Elementary - Advanced

**Maximum Class Size:** 15 students

**Class time:** Lessons are 55 minutes each with a 15 minute break

**Visa Requirements:** GE15 - you can use a Student Visitor Visa or Extended Student Visitor Visa. GE21/GE25/GE30- you can use a Student Visitor Visa, Extended Student Visitor Visa or Tier 4 Visa

**Minimum age:** 16 years (written parental consent is required for students under 18 years of age)

### Standard Course:

15 lessons per week

Monday - Friday

09:00 - 12:00 or 13:00 - 16:00

### Standard Plus Course:

21 lessons per week

Monday - Friday

09:00 - 12:00 and two afternoons per week 13:00 - 16:00

Or Monday - Friday 13:00 - 16:00 and two mornings per week 09:00 - 12:00

### Intensive Course:

25 lessons per week

Monday - Friday

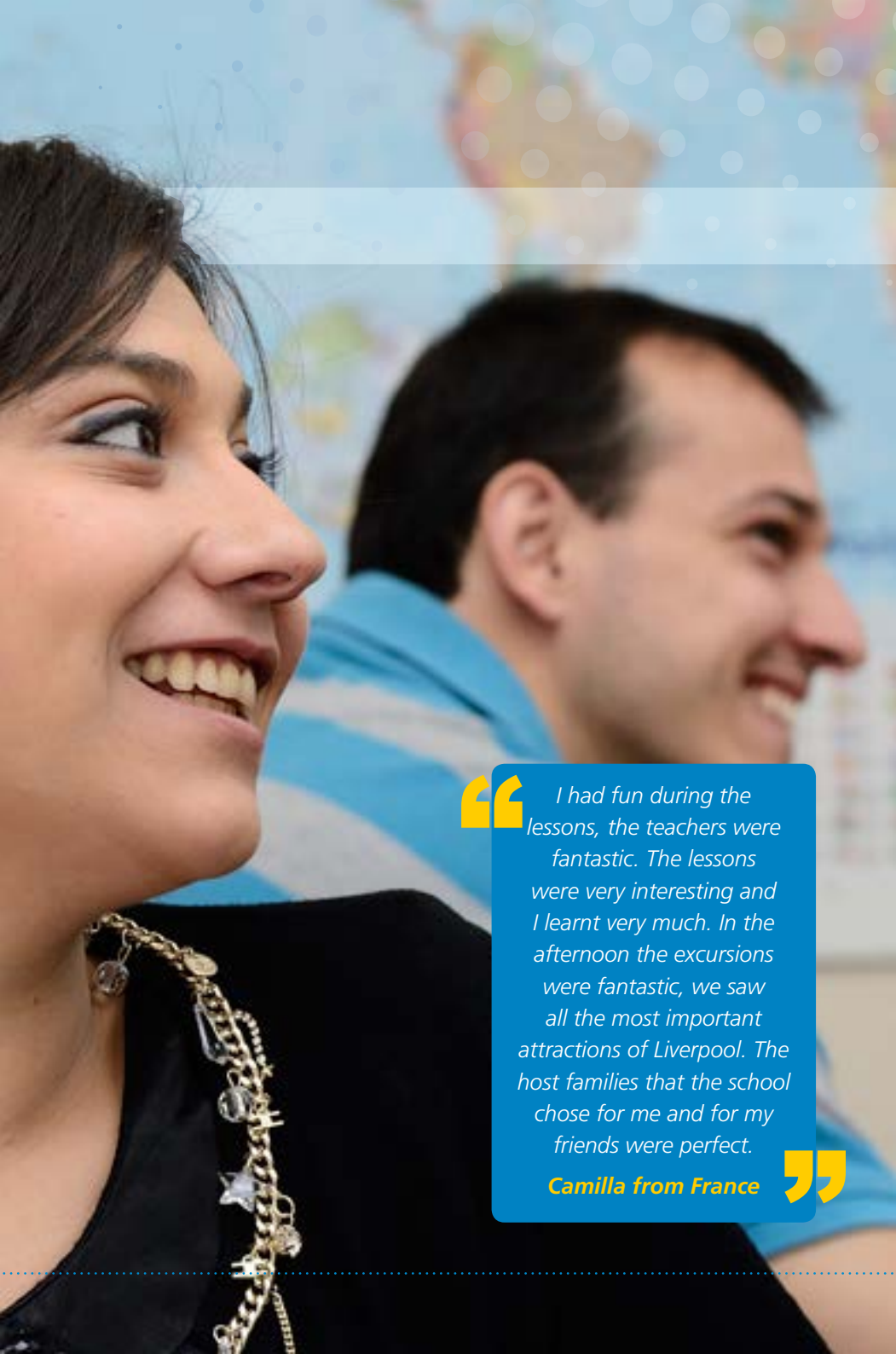
09:00 - 12:00 and 13:00 - 15:00

### Intensive Plus Course

30 lessons per week

Monday - Friday

09:00 - 12:00 and 13:00 - 16:00




“ I had fun during the lessons, the teachers were fantastic. The lessons were very interesting and I learnt very much. In the afternoon the excursions were fantastic, we saw all the most important attractions of Liverpool. The host families that the school chose for me and for my friends were perfect. ”  
**Camilla from France**

# English for **Business**

**On this course you will learn important language skills and gain the confidence to succeed in a fast paced business environment.**

The course is a combination of 15 hours of General English lessons and 6 hours of English for Business lessons where you will practise skills such as:

**COURSE DETAILS**



**Course starts:** Any Monday  
**Levels:** Intermediate +  
**Maximum Class Size:** 15 students  
**Class time:** GE15 + 3 afternoons per week from 13:00 – 15:00. The afternoons will be 2 lessons (55 minutes) with a 10 minute break.  
**Visa Requirements:** Student Visitor Visa, Extended Student Visitor Visa or Tier 4 Visa  
**Minimum age:** 16 years (written parental consent is required for students under 18 years of age)

- Using telephone English
- Holding discussions and negotiations
- Writing reports
- Writing letters and emails
- Giving presentations
- Presenting numerical information and basic statistics
- International business culture and protocol

**What ISI say about us...**  
The quality of teaching is excellent; lessons are very well planned. Students participate with enthusiasm and make excellent progress. Student attainment is very good.

# IELTS Examination Preparation Courses

## General English plus IELTS

IELTS courses are designed for people who want to go and study at a university in the UK. Our IELTS Team have been teaching IELTS and Cambridge courses for over 10 years; in that time we have helped many students go on to study undergraduate and postgraduate courses in the UK. We know that we have the knowledge and experience to help you improve your IELTS score!

### COURSE DETAILS



**Course starts:** Any Monday

**Levels:** Pre-Intermediate+

**Maximum Class Size:** 15 students

**Class time:** GE15 + 4 afternoons per week from 13:00 – 15:00. The afternoons will be 2 lessons (55 minutes) with a 10 minute break.

**Visa Requirements:** Student Visitor Visa or Tier 4 Visa

**Please note:** Examination fees are not included in the course price-you will need to pay an exam fee of £145.\* IELTS exams will be taken at an external examination centre in Liverpool, Manchester or another UK site

**Minimum age:** 16 years (written parental consent is required for students under 18 years of age)

\*examination fees subject to change





## IELTS Accelerator plus Study Skills

This is the course to take if you really want to focus on your IELTS score. You will learn important skills for taking the exam and take practise tests. You will have 1:1 tutorials and feedback with your tutor to monitor your progress.

You will also learn skills that will help you during your time at university such as how to take notes in lectures and deliver a good presentation.

### What ISI say about us...

Assessment of students' work is highly effective. Written work is marked carefully with detailed feedback to students, enabling them to improve. The great majority of student attainment is very good.

## COURSE DETAILS



**Course length:** 12 weeks

**Levels:** Intermediate+

**Maximum Class Size:** 15 students

**Class time:** Monday – Friday: 3 lessons (55 minutes) with a 15 minute break from 09:00 – 12:00 and 3 afternoons per week from 13:00 – 15:00. The afternoons will be 2 lessons (55 minutes) with a 10 minute break.

**Visa Requirements:** Student Visitor Visa or Tier 4 Visa

**Please note:** Examination fees are not included in the course price – you will need to pay an exam fee of £145\*. IELTS exams will be taken at an external examination centre in Liverpool, Manchester or another UK site.

**Minimum age:** 16 years (written parental consent is required for students under 18 years of age)

\*examination fees are subject to change



# Cambridge Examination Preparation Courses

Cambridge examination courses don't just help you improve your examination technique, they focus on your practical English skills too!

Cambridge certificates are widely-recognised general English qualifications which prove that you can use the language in real-life situations. In addition to exam preparation, you will also learn study skills and receive extensive reading and listening practise to build your vocabulary and grammar range.

This 10-12 week preparation courses are aimed at Upper-Intermediate to Advanced level students, with the option of taking the exam at the school at the end of the course.

## COURSE DETAILS



**Course starts:** Please see our website [www.lse.uk.net](http://www.lse.uk.net) for starting dates for this course

**Course Length:** 10 or 12 weeks

**Levels:** Upper - Intermediate +

**Maximum Class Size:** 15 students

**Class time:** FCE and CAE courses are 4 afternoons per week of 2 lessons (55 minutes) with a 10 minute break

PET courses are 3 afternoons a week of 2 lessons (55 minutes) with a 10 minute break

**Visa Requirements:** Student Visitor Visa or (if paired with GE15) Tier 4 Visa

**Please note:** Examination fees are not included in the course price – you will need to pay an exam fee of £80 or £145 depending on the course\*

PET, FCE and CAE exams can be taken at The Liverpool School of English.

**Minimum age:** 16 years old (written parental consent is required for students under 18 years of age)

You can take a combined 15 hour General English and Cambridge examination course, or you can simply take a part time Cambridge course. This course runs three times a year, however we are also able to offer the course on demand for groups of 10 or more students. As well, we can offer an intensive four week FCE course, beginning on the 6th of July 2015.

**A Quick Guide to Cambridge exam levels**

**PET – Intermediate.** 6 hours per week (Tuesday – Thursday). Exam fee £80\*

**FCE – Upper Intermediate.** 8 hours per week (Monday – Thursday). Exam fee £145\*

**CAE – Advanced.** 8 hours per week (Monday – Thursday). Exam fee £145\*

\*examination fees are subject to change.



## Specialist Courses

All of our courses are planned and constructed with care and attention to the needs of our learners, but if you need a special course we can tailor one to meet your needs.

### Individual Tuition

You can receive individual tuition on top of your General English course on a 1:1 basis. The amount of hours in the course will depend on how many hours you feel that you need, and this will be agreed between you and your personal tutor. Any student at the school is able to apply for individual tuition, so if you feel like you need a little bit of extra help writing reports, understanding banking or business documents or even just extra help with study skills, then you might want to consider individual tuition.

### Bespoke Programmes for Groups

Throughout the year we also design special programmes for groups. In the past these have included Maritime English, English and Technology, English for Banking and English Language and Culture

To enquire about a bespoke programme please contact our groups department via [groups@lse.uk.net](mailto:groups@lse.uk.net)

We are also able to offer our TKT programme on demand for groups of 10 or more students, please turn to page 25 for more information about this course.





## COURSE DETAILS



**Course Starts:** Group course can start on any Monday (This course must be booked at least 6 weeks in advance of the starting date) For individual starting dates please check our website [www.lse.uk.net](http://www.lse.uk.net)

**Course Length:** 3 weeks minimum (1 week of General English + 2 or more weeks of work experience)

**Levels:** Intermediate+ (Prior English level testing is required for all applicants)

**Maximum Class Size:** 15 students (General English classes)

**Class time:** Monday to Friday: GE15 + 2 afternoons per week from 13:00-16:00 of English in the Workplace\*. The afternoons will be 3 lessons of 55 minutes each with a 15 minute break.

**Minimum age:** 17 years (written parental consent is required for students under 18 years of age)

**Please note:** This programme is available to all EU Nationals. If you are from outside the EU please contact [groups@lse.uk.net](mailto:groups@lse.uk.net) to see if you are eligible for this programme.

## English and Work Experience

We can also arrange a General English course with an unpaid work placement for groups and individuals. We currently work with over 100 businesses in Liverpool and can provide placements in a variety of fields from hotels, to design companies, to engineering firms. We also provide help with CVs and advice on interview techniques as well as giving you regular mentoring during your course.

\*For groups smaller than 6 students English in the Workplace will be replaced with General English

# Teacher Training Courses



## Trinity CertTESOL

The Trinity College London Certificate in Teaching English to Speakers of other Languages (TESOL) is an internationally recognised teacher training qualification which allows you to become an English language teacher either in the UK or abroad.

This course is designed to develop your knowledge and understanding about the process of teaching and learning. Our teacher trainers have years of teaching experience in the UK and abroad and they are always enthusiastic, supportive and ready to help you learn.



On this course you will learn all of the foundation skills you will need to take up a teaching post such as:

- Understanding the main phonological, lexical and syntactical features of modern English.
- Appreciating the needs and motivations of individuals and groups of learners
- Designing and delivering lesson plans
- Evaluating, using and adapting published teaching materials
- Creating your own teaching materials and classroom aids

## COURSE DETAILS



**Course Starts:** Please see our website [www.lse.uk.net](http://www.lse.uk.net) for starting dates for this course

**Course Length:** 4 weeks

**Visa Requirements:** Student Visitor Visa for non EU nationals/UK citizens

**Maximum Class Size:** 12 students

**Class time:** 9am – 5pm (timetable may vary)

**Levels:** Native speakers or IELTS 7.0+

**Minimum age:** 18 years old

# Teaching Knowledge Test (TKT) and Teacher Development with CLIL

If you're a teacher from the EU you can apply for funding to study our TKT and CLIL courses under the Erasmus+ programme. For more information about Erasmus+ please visit [www.erasmusplus.org.uk](http://www.erasmusplus.org.uk)

On top of this you will get TKT exam practice tasks and practice test papers before the final exam. Alternatively, if you want to teach English as a second language or to deliver specialist subjects such as law or biology via the medium of English in your home country then our Teacher Development with Content and Language Integrated Learning (CLIL) course would be a great option for you!

If you're a teacher from the EU you can apply for funding to study our TKT and CLIL courses under the Erasmus plus programme. For more information about Erasmus plus please visit <https://www.erasmusplus.org.uk/>

## COURSE DETAILS



**Course Starts:** TKT is offered three times per year and CLIL twice a year- Please see our website [www.lse.uk.net](http://www.lse.uk.net) for starting dates for these courses

**Course Length:** 60 hours in total over 2 or 3 weeks (including breaks) for TKT and 30 hours over 2 weeks for CLIL (including breaks)

**Visa Requirements:** Student Visitor Visa or Tier 4 Visa

**Maximum Class Size:** 8 students

**Class time:** 9am – 5pm (timetable may vary)

**Examination fees:** £30 per module (subject to change/not included)

**Levels:** Upper Intermediate +

**Minimum age:** 18 years old

The TKT course is split into three modules:

**TKT Module 1** – Language and background to language learning and teaching

**TKT Module 2** – Lesson planning and use of resources for language teaching

**TKT Module 3** – Managing the teaching and learning process

Both our TKT and CLIL course cover important components of teaching such as:

- Language and background to language learning
- Lesson planning and use of resources
- Managing the teaching and learning process
- Methodology and techniques

**On the TKT you will also receive:**

- Cambridge TKT examination practise
- Cambridge Teaching Knowledge exams for Modules 1, 2 and 3

**On the CLIL you will also receive:**

- Teaching Target Structures through CLIL
- CLIL and lesson planning
- Materials design and adaptation
- Subject-based vocabulary teaching

At the end of the TKT course you'll receive a recognised international teaching certificate from the Cambridge ESOL Examinations Board. On the last day of the CLIL course, you have the opportunity to take The University of Cambridge Teaching Knowledge Test (TKT) CLIL module

Learn, Succeed and Enjoy

The Liverpool School of English

# Summer School

# English and Culture Course **for Juniors 12-17 years old**

**At our summer school we aim to provide an educational and enjoyable all round learning experience and a valuable insight into British life and culture.**

Through our successful partnership with the City of Liverpool College we are able to offer the best educational and recreational facilities in the city for our students at The Learning Exchange (LEX).

We have international classes of no more than 15 students in any class. Our summer school teachers use a diverse range of teaching methods, including interactive technology to deliver communicative lessons.

Our lessons are designed to develop reading, listening, speaking and writing skills – functional English that students can use both in and out of the classroom.

Our students are all provided with a learning journal to keep a record of vocabulary, classwork, individual progress and details of their experiences on activities and excursions.



## Inside The LEX there is:



Use of up to 4 computer rooms



Use of up to 25 modern, digital classrooms



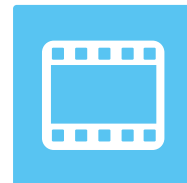
Free Wi-Fi throughout the building



Indoor and outdoor relaxation areas for socialising



An indoor sports hall, with showers and changing rooms



A large, fully equipped atrium for social activities such as games, karaoke, films and discos



A bright, modern, well managed college restaurant

# A week in the life of a **summer school student**

This programme is an example of a 15 hour course with 20 lessons of 45 minutes each. We are also able to provide a 21 hour course of 28 lessons, with exam preparation for Trinity or Cambridge FCE exams upon request.

*"I liked everything about it, Liverpool is a very beautiful city, people at the school are very friendly and the teachers are very good"*  
**Boris from Russia**

	Morning Lessons	Morning Lessons	Afternoon Lessons	Evening Activity*
<b>Monday</b>	Placement testing and induction lesson 8:45–10:15	Lesson 2 10:30-12:00	Afternoon excursion 13:30 – 17:00	Welcome Party 19:00-21:00
<b>Tuesday</b>	Lesson 1 8:45–10:15	Lesson 2 10:30-12:00	Afternoon excursion 13:30 – 17:00	Quiz Night 19:00-21:00
<b>Wednesday</b>	Lesson 1 8:45–10:15	Lesson 2 10:30-12:00	Afternoon excursion 13:30 – 17:00	Karaoke 19:00-21:00
<b>Thursday</b>	Lesson 1 8:45–10:15	Lesson 2 10:30-12:00	Afternoon excursion 13:30 – 17:00	Film Night or Sports 19:00-21:00
<b>Friday</b>	Lesson 1 8:45–10:15	Lesson 2 10:30-12:00	Afternoon excursion 13:30 – 17:00	Disco 19:00-21:00
<b>Saturday**</b>	Full Day Excursion to London, Chester or Manchester and the Museum of Science and Industry			
<b>Sunday**</b>	Optional Excursion (Please see price list) or free day with group leader***			

BREAK 10:15 - 10:30

LUNCH 12:00 - 13:30

EVENING MEAL 17:00 - 19:00

\*Please note that evening activities are available for residential students only

\*\* Please note that a hot lunch will not be available during weekends and a packed lunch will be provided instead

\*\*\* To avoid disappointment we advise that you book your optional excursions in advance because we cannot guarantee availability at short notice.



