



# ENGLISH IN CHESTER

ENGLISH LANGUAGE TRAINING SPECIALISTS

2015



General English  
Courses (age 17+)



25+ Courses



Examination Courses



50+ Courses



Courses for Teenagers  
& Young Learners



**LESSONS/HOURS PER WEEK**

28 lessons / 21 hours including:

- 20 core morning lessons
- 8 afternoon option lessons

**START DATES**

Any Monday between 5 January and 18 December for a minimum of 2 weeks.

*Students at Elementary A1 level who want a 12 week+ course are advised to start on 5 January, 7 April, 29 June or 28 September.*

**AGES**

Minimum: 17

Average: 24

Age Range: 17 - 60

*Please read the section in our Terms & Conditions on page 17 about students under the age of 18.*

**CLASS SIZES**

Average: 8

Maximum: 12

**LEVELS**

Elementary to Advanced  
(A1 to C1)

*Students with a level lower than A1 are only accepted for individual tuition.*

**SPECIAL FEATURE**

A flexible, personalised course structure. Inclusive afternoon options ensure that the specific needs of each student are met.

***“Studying here was a great experience and it is the best choice to improve your language skills.”***

*Petra, Slovakia*



Improve your English language competence and communicative ability in a relaxed and friendly learning environment. Make new friends, discover new places and live the language. Choose from a range of afternoon classes to personalise your course.

Our General English Courses aim to develop your ability to communicate effectively. All aspects of language are covered with an emphasis on speaking and listening. These carefully structured and flexible courses give you an opportunity to select from a range of afternoon classes. This enhances and personalises your learning.

**COURSE PROGRAMME (MORNING)**

All students follow a course-book based morning programme from 09.30 to 13.00 in classes at an appropriate English language level. You will see two teachers; one focussing on general language development and the other on the development of language skills. In all lessons the emphasis is on spoken English.

**COURSE PROGRAMME (AFTERNOON)**

Afternoon lessons run from 14.15 to 15.45. There is a lot of choice in the programme. You will discuss your needs with the academic team and choose the most appropriate afternoon classes. Afternoon classes are flexible and you can change your options as your needs change. The range of afternoon classes offered will also change from time to time to reflect the overall composition of students in the school. Options include a range of skills and communication classes preparing you to function more effectively in your everyday life, in the workplace and in your academic studies.

### INCLUSIVE FEATURES

Tuition fees include:

#### e-CHESTER

e-Chester is our online guided learning programme. You can have free, full access to e-Chester from the time of booking, during your course and for 6 months after your course finishes.

#### SELF-ACCESS CENTRE

A teacher is available to help you in our well-equipped centre for an additional 7 hours a week.

#### TUTORIALS

Regular meetings to discuss your progress / study plans.

### STUDENT NUMBERS ON GENERAL ENGLISH COURSES 2013/14

Spain	12%
Switzerland	10%
Italy	10%
Russia	7%
South Korea	7%
Japan	4%
France	4%
Czech R.	4%
Germany	4%
Turkey	4%
Other	34%

*"I had a really nice experience at English in Chester because the school has a good mix of nationalities."*

Giusy, Italy



### SAMPLE TIMETABLE (INTERMEDIATE)

Monday	Tuesday	Wednesday	Thursday	Friday
<b>09.30 - 11.00: Language Development</b>				
Vocabulary: Technology	Grammar: Comparatives & Superlatives	Grammar/ Pronunciation: Question Tags	Self-Study: Self-Access Centre & Vocabulary: Word Building	Everyday English: Polite Requests & Weekly Review and Feedback
<b>COFFEE BREAK</b>				
<b>11.30 - 13.00: Skills</b>				
Reading: 20th Century Technology	Speaking & Listening: Technology	Writing & Discourse Markers: Advantage/ Disadvantage essay	Reading: Problems and Solutions	Listening & Speaking: Top Gear DVD
<b>LUNCH BREAK</b>				
<b>14.15 - 15.45: Option Classes</b>		<b>Free Afternoon</b>	<b>14.15 - 15.45: Option Classes</b>	
<ul style="list-style-type: none"> <li>Vocabulary</li> <li>Conversation Skills</li> <li>British Life</li> <li>Academic Writing</li> <li>Pronunciation</li> <li>IELTS introduction</li> </ul>	<ul style="list-style-type: none"> <li>Grammar Workshop</li> <li>Listening and Discussion</li> <li>English for Work and Business</li> <li>IELTS Foundation</li> <li>IELTS Higher</li> </ul>	or <ul style="list-style-type: none"> <li>Supervised self-study in the self-access centre</li> <li>Join the writing workshop</li> <li>Join a social programme activity</li> </ul>	<ul style="list-style-type: none"> <li>Listening and Speaking</li> <li>Writing Skills</li> <li>Reading and Discussion</li> <li>Focus on the News</li> <li>IELTS introduction</li> </ul>	<ul style="list-style-type: none"> <li>Communication Activities</li> <li>English for Work and Business</li> <li>Film and Literature</li> <li>IELTS Foundation</li> <li>IELTS Higher</li> </ul>
<b>15.45 - 16.45: Supervised self-study in the self-access centre (optional)</b>			<b>15.45 - 16.45: Supervised self-study in the self-access centre (optional)</b>	

- Daily homework is set by morning teachers.
- Students at A1 level have extra General English classes in place of afternoon Option Classes.
- Additional Options available in the summer include: English through Song, English through Drama, English in Chester Blog and Focus on Chester.



On our General English Courses (age 17+) there will be **NO LESSONS** on public holidays: Friday 3 April, Monday 6 April, Monday 4 May, Monday 25 May and Monday 31 August and there is no discount in fees.

**LESSONS/HOURS PER WEEK**

30 lessons / 22½ hours

**START DATES**

Any Monday between 5 January and 18 December for between 1 and 6 weeks.

*If you have only one week we strongly advise you to choose the 25+ Combination Course.*

**AGES**

Minimum: 25

Average: 44

Age Range: 25 - 60

**CLASS SIZES**

Average: 3

Maximum: 6

**LEVELS**

Elementary to Advanced

(A1 to C1)

*Beginners are only accepted for individual tuition.*

**SPECIAL FEATURE**

Inclusive Chester orientation and weekly early-evening social event. Other optional evening and weekend events at cost.

***“My experience at English in Chester was 100% positive. The teachers were very good. I met interesting people and enjoyed the social programme. I love my host family, they were polite and attentive!”***

*Simone, Italy*



25+ Courses are short, intensive English language programmes suitable for people who simply want to improve or brush up their English language skills in a general or work-related context.

**THE 25+ COURSE - ENGLISH FOR EVERYDAY LIFE AND THE WORKPLACE**

The 25+ Course is run in our Language Training Centre. This is a separate, historic building opposite the main school. The centre provides a comfortable learning environment with good training and technology facilities, including iPads, Apple TVs and projectors. There is a computer room and Wi-Fi Internet access throughout the building. Students and trainers can meet, read, relax and enjoy free tea and coffee facilities in the spacious lounge.

Everyone is busy and it is not always easy to find time for an English language course. The 25+ Course is designed to make the best use of a short period of study and includes:

- English language work with a focus on spoken English and conversation skills
- Lessons aimed at improving our clients' performance in English in their everyday life and in their workplace
- An adult environment in a building dedicated to our mature students over the age of 25
- Social events and excursion possibilities to help you make the most of your short stay in Chester

You will complete a questionnaire prior to your course and our staff will design the course programme to reflect your needs. With our small classes learning is, therefore, highly effective and personalised.

**Sample Timetable (Intermediate)**

Monday	Tuesday	Wednesday	Thursday	Friday
<b>09.30 - 11.00: Language Development in a Real-Life Context</b>				
Past experiences: Past simple, forming questions, positive and negative responses	Making arrangements: Going to future and present continuous	Transport: Comparatives and superlatives	The best companies to work for: Practise comparatives and giving opinions	Places I have been: First and second conditional
<b>COFFEE BREAK</b>				
<b>11.30 - 13.00: Social &amp; Communication Skills in English</b>				
Travel situations and hotels	Telephone skills	The news in English	Developing conversations and small talk	E-mail skills
<b>LUNCH BREAK</b>				
<b>14.15 - 15.45: English Practice</b>				
English at Work: Interviews and CVs	English for Life: Conversation and Communication	English at Work: Giving a presentation	English for Life: Vocabulary Development	English at Work: Taking part in meetings
<b>15.45 - 16.45 (and 13.00 - 14.00 Wednesday): Supervised self-study in the self-access centre (optional)</b>				

- Homework will be set regularly throughout the programme.

**LESSONS/HOURS PER WEEK**

30 or 35 lessons / 22½ or 26¼ hours

**START DATES**

Any Monday between 5 January and 18 December for between 1 and 6 weeks

**AGES**

Minimum: 25  
Average: 44  
Age Range: 25 - 60

**CLASS SIZES**

Average: 3  
Maximum: 6

**LEVELS**

Elementary to Advanced (A1 to C1)

*Beginners are only accepted for individual tuition.*

**SPECIAL FEATURE**

Inclusive Chester orientation and weekly early-evening social event. Other optional evening and weekend events at cost.

**THE 25+ COMBINATION COURSE**

The 25+ Combination Course features both group and individual lessons to meet your specific needs in General English, Work-related English or English for Special Purposes (ESP).

Our 25+ Combination Course is ideal for clients who have two basic requirements:

- To develop their all-round fluency in English
- To have some specific English language training to meet their personal or professional needs

Your needs are always assessed prior to the commencement of the course. You can vary the intensity of your course with different combinations of group and individual tuition.

We have experience in delivering courses for clients from many different professional areas. We have been working in the corporate market for many years and as a consequence have developed several areas of expertise which we can now offer as 25+ Combination Courses with ESP. Among the specialisms that we are able to offer are English for Tourism Management, English in the World of Finance, English for Human Resource Management, English for Marketing, English for Customer Services, English for Journalism, English for Aviation and English for Transport/Logistics.

English in Chester has excellent local contacts in many professional areas. These contacts, both at an academic and more practical level, can often be involved in our 25+ Combination Courses.

*"If you want to live in a very English city - go to Chester. If you want to get good practice and improve your English with highly qualified teachers - go to English in Chester!"*

*Maria, Russia*



**INCLUSIVE FEATURES ON ALL 25+ COURSES**

Tuition fees include:

**e-CHESTER**

e-Chester is our online guided learning programme. You can have free, full access to e-Chester from the time of booking, during your course and for 6 months after your course finishes.

**SELF-ACCESS CENTRE**

A teacher is available to help you in our well-equipped centre for up to an additional 5 hours a week.

**REVIEW SESSIONS**

Regular meetings to discuss your progress / study plans.

**STUDENT NUMBERS ON 25+ COURSES 2013/14**

Germany	19%
Spain	16%
Switzerland	16%
Italy	12%
Russia	9%
Other	28%

*"This was my second course in three years. I had a one-to-one individual course. The course took place in a pleasant atmosphere and was very useful for improving my English."*

*Holger, Germany*

**COURSES FOR THE INDIVIDUAL & 2:1 COURSES**

Full-time one-to-one courses can start on any Monday. These courses normally include 22½ hours of tuition per full week (with a reduction when there is a public holiday during the week).

Two people from the same company at the same language level and with the same needs may benefit from a 2:1 course. These courses can start on any Monday and include 22½ hours of tuition per full week (with a reduction when there is a public holiday during the week).

**OTHER SPECIAL COURSES**

We have been creating specialist short courses for individuals and groups for over 30 years. These courses are tailored to meet individual and group needs and are delivered by our very experienced teaching team.

**Specialist English Courses for Groups from One Source**

We are happy to design a special course for a group of employees from a company. Full-time courses typically include 22½ hours of tuition per week, often with an accompanying programme of professional visits. For a quotation please contact us outlining your requirements.

**Courses for Teachers**

English in Chester runs short, very flexible, tailor-made courses for groups of teachers of English from overseas. Courses normally include language development and there is a methodology component with a number of practical ideas for teachers. Courses can be aimed at teachers of young learners in different age groups or at teachers of adult learners. They can be for experienced teachers or for new entrants to the teaching profession.



**On our 25+ Courses there will be NO LESSONS on public holidays: Friday 3 April, Monday 6 April, Monday 4 May, Monday 25 May and Monday 31 August and there is a reduced fee.**

**LESSONS/HOURS PER WEEK**

30 lessons / 22½ hours

including:

- 20 core morning lessons
- 10 lessons Exam Focus group

**START DATES**

Set start dates, see table.

Students may take part of an exam course. Fees are pro rata and there may be a late exam entry fee. Please note the written exam dates. The oral exams will take place before the course finish date.

**MINIMUM AGE**

17

Please read the section in our Terms & Conditions on page 17 about students under the age of 18.

**MAXIMUM CLASS SIZE**

12

**SPECIAL REQUIREMENTS**

There is a barrier test for all FCE/CAE courses. If students book an exam course and on arrival in Chester are not at the right level, they will be transferred to the most suitable course available.

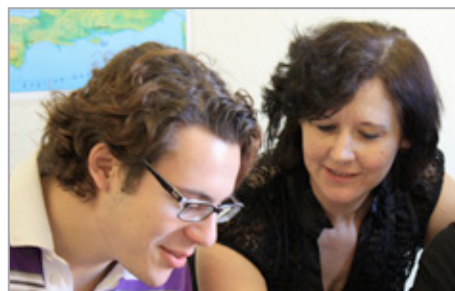
It is always valuable to take an internationally-recognised examination. Cambridge English exams are accepted by over 15,000 universities, employers and governments around the world. The exams open doors to higher education and improve employment opportunities. English in Chester is a Cambridge Examination Centre and all exams take place at the school.

**CAMBRIDGE ENGLISH: FCE & CAE COURSES**

We specialise in preparation for the Cambridge English First (FCE) and Advanced (CAE) examinations. FCE is an upper-intermediate level qualification. It proves you can use everyday written and spoken English for work or study purposes. A CAE pass shows that you are a high achiever in your use of all English language skills.

*"If you are looking for a very well-organised course for Cambridge examinations you will be absolutely satisfied with English in Chester."*

*So-Young, South Korea*



Tuition fees on FCE and CAE courses include the provision of a main examination course book (and practice book if appropriate) and all examination fees.

### LESSONS/HOURS PER WEEK

28 lessons / 21 hours including:

- 20 core morning lessons
- 4 lessons from a choice of afternoon options
- 4 lessons Exam Focus group

### LESSONS/HOURS PER WEEK

28 lessons / 21 hours including:

- 20 core morning lessons
- 4 lessons from a choice of afternoon options
- 4 lessons Exam Focus group

### START DATES

Any Monday between 5 January and 18 December for a minimum of 2 weeks.

### LEVELS

A2 to C1

### INCLUSIVE FEATURES ON ALL EXAMINATION COURSES

Tuition fees include:

#### e-CHESTER

e-Chester is our online guided learning programme. You can have free, full access to e-Chester from the time of booking, during your course and for 6 months after your course finishes.

#### SELF-ACCESS CENTRE

A teacher is available to help you in our well-equipped centre for up to an additional 5 or 7 hours a week depending on the exam chosen.

#### TUTORIALS

Regular meetings to discuss your progress / study plans.

### KEY ENGLISH TEST (KET) & PRELIMINARY ENGLISH TEST (PET)

If you are at a A2/B1 level on General English Courses we encourage you to take KET and/or PET exams. Preparation takes place in the 4 weeks prior to the exam. Test dates are on:

- Saturday 14 March
- Friday 29 May
- Friday 4 December

### IELTS PREPARATION

IELTS is often a requirement for university entry. We offer IELTS examination preparation throughout the year for 2 afternoons a week at 3 levels from A2 to C1. You can join IELTS preparation options at any time during the year and we organise IELTS examination sessions several times a year at our partner IELTS centre in Wrexham. We organise IELTS examinations in Wrexham in March, May, August and November. If these dates are not convenient the school can advise you of other possibilities. There is an exam entry fee (approximately £150.00). Students will pay for their own transportation to the exam centre.



### TOEIC PREPARATION

TOEIC preparation classes are also offered throughout the year, subject to demand.

**On our Examination Courses there will be NO LESSONS on public holidays: Monday 4 May and Monday 25 May and there is no discount in fees.**



## 50+ Courses

### Language Holidays for the Over Fifties

#### LESSONS/HOURS PER WEEK

20 lessons / 15 hours plus inclusive social programme

#### START DATES

Set dates for 2 and 3-week courses. Students who cannot take the full 3-week course can be accepted on the first 2 weeks of the course subject to availability. Fees are pro rata.

#### AGES

Minimum: 50  
Average: 59

#### MAXIMUM CLASS SIZE

10

#### LEVELS

- Elementary / Pre-Intermediate (A1/A2)
- Intermediate + (B1/B2)
- Advanced (B2+/C1)

#### STUDENT NUMBERS 2013/14

Switzerland	26%
Japan	12%
Germany	11%
Spain	10%
Canada	10%
6%	Russia
5%	Czech R.
Other	20%

*“The teachers have been extremely kind and helpful. I would recommend this course to anyone.”*

*Brasileira, Brazil*



Chester is a perfect base for mature students. It is a heritage city with unique charm. The buildings, history, traditions and position on the River Dee make Chester a leading tourist centre attracting many international visitors.

The 50+ Course enables you to practise your English, explore our region, meet new people and make new friends. The course includes:

#### Language Development (15 hours per week)

The lessons enable you to:

- improve your understanding of spoken English
- improve your accuracy in the use of language
- increase your confidence in speaking English naturally
- acquire a variety of formal and informal vocabulary in a range of contexts

Students may be offered the opportunity to join a General English group if this is more appropriate to their level of English and/or interests.

#### The Inclusive Social Programme

This is organised and supervised by our experienced staff who accompany you on all the trips. Each course includes three half-day/early evening events during the week and a full-day tour at the weekend. There is an optional weekly evening event at extra cost. The programme:

- introduces you to the beautiful city of Chester and the surrounding area
- enables you to visit many major tourist attractions
- takes you to outstandingly beautiful National Parks e.g. North Wales, The Lake District or The Peak District and to towns and famous cities like Liverpool and Manchester
- includes a “Meet the British” component



Monday 4 May, Monday 25 May and Monday 31 August are public holidays when there will be an orientation programme for students on the 50+ Course instead of lessons for that day.

# Courses for Teenagers & Young Learners

## Vacation Courses for Teenagers (Age 14-16)

### LESSONS/HOURS PER WEEK

20 lessons / 15 hours plus  
inclusive social programme

### START DATES

Any Monday from 29 June to  
14 August for between 2 and 4  
weeks

### AGES

Minimum: 14

Maximum: 16

*Please read the section in our  
Terms & Conditions on page 17  
about students under the age  
of 18.*

### MAXIMUM CLASS SIZE

12

### LEVELS

Elementary to Advanced  
(A1 to C1)

### SPECIAL WEEKLY FEATURES

- 2 project based afternoons
- 1 half-day excursion
- 2 half-day activities
- 2 evening events
- 1 full-day weekend excursion  
on all mid-course weekends  
(not the final Saturday)

*"I spent a great two weeks  
at English in Chester and  
had a lot of fun. My English  
improved everyday thanks to  
the wonderful staff, students  
and atmosphere at the  
school."*

– Giulia, Italy



This summer course, run on the University of Chester campus, is only for individual teenagers and "mini" groups (maximum 10 students per group). We create opportunities for students to increase their confidence in English while learning about the culture and customs of other nations.

English in Chester has been running Vacation Courses for Teenagers for many years. The special features of our courses are:

- No large groups - so every student is known and treated as an individual
- A high staff to student ratio (1:10) - for extra care at all times
- A maximum of 100 students - allowing us to give a lot of attention to every student
- An excellent nationality mix - giving more opportunity for students to speak English
- A varied, high quality social programme
- Very good homestay accommodation with welcoming and caring families



## STUDENT NUMBERS 2013/14

Italy	24%
Russia	20%
Spain	19%
6% Czech R.	
4% Germany	
Other	27%



## THE PROGRAMME

Morning lessons (09.30-13.00) focus on actively improving your communication in spoken English. There is a language focus, enabling you to use language structures with confidence, and a skills focus to improve your spoken and written English using the Internet, newspapers, magazines, radio programmes, poems and songs.

The afternoon excursion/activity programme is one of the outstanding features of the course. It is an integral part of the whole language learning experience and is designed to be enjoyable and stimulating. It is also an opportunity to develop language, social and sporting skills.

## SAMPLE SOCIAL PROGRAMME

Week	Monday	Tuesday	Wednesday	Thursday	Friday	Saturday	
1	PM	① Introductory Tour (for new arrivals only)	Sport / Art / Drama / Dance	International Evening Prep.	Sport / Art / Drama / Dance	Chester Zoo	Full Day: Alton Towers
	Eve		Riverboat Disco		International Evening		
2	PM	① / Talent Night Prep.	Sport / Art / Drama / Dance	Talent Night Prep.	Sport / Art / Drama / Dance	Ice Skating	Full Day: Manchester
	Eve		Bowling		Talent Night		
3	PM	① / Chester Photo Shoot	Sport / Art / Drama / Dance	Quiz Prep.	Sport / Art / Drama / Dance	Manchester City FC Tour	Full Day: North Wales
	Eve		Riverboat Disco		Quiz		
4	PM	① / Chester Treasure Hunt	Sport / Art / Drama / Dance	Beatles Project	Sport / Art / Drama / Dance	Beeston Castle / Ice Cream Farm	Full Day: Liverpool
	Eve		Bowling / Laser Quest		Alternative Fashion Show		
5	PM	① / Chester Fairy Tale	Sport / Art / Drama / Dance	International Evening Prep.	Sport / Art / Drama / Dance	Chester Zoo	Full Day: Alton Towers
	Eve		Riverboat Disco		International Evening		
6	PM	① / Film Chester	Sport / Art / Drama / Dance	Film Chester	Sport / Art / Drama / Dance	Ice Skating	Full Day: North Wales
	Eve		Bowling		English in Chester Oscars		
7	PM	Quiz Prep.	Sport / Art / Drama / Dance	Chester Treasure Hunt	Sport / Art / Drama / Dance	Manley Mere	
	Eve		Quiz		Riverboat Fancy Dress Disco		

Saturday excursions are only for students staying the following week

## Courses for Teenagers & Young Learners

### Courses for Closed Groups

School groups, with students from the ages of 14 to 18, attend specially planned short courses throughout the year. In recent years groups have come from Switzerland, Spain, Italy, Austria, Mexico, Japan, Poland, Argentina, France, Hong Kong and the Czech Republic.

These courses can be run at any time of year, but not normally during July and August, for a group of young learners. Course dates, course intensity, programme details with inclusive excursions and activities, class size and accommodation requirements are all negotiable. Special arrangements are occasionally made for small groups of younger learners from the age of twelve. English in Chester has a wealth of experience in tailor-making programmes for young people and welcomes all enquiries. **Please ask for our Courses for Groups brochure.**

*"It has been great to watch my students' English improve. The school took care of every aspect of our stay, which made it very easy and enjoyable."*

June, Group Leader, Italy

