

# ENGLISH IN THE USA

AN AMERICAN EXPERIENCE AT TLA





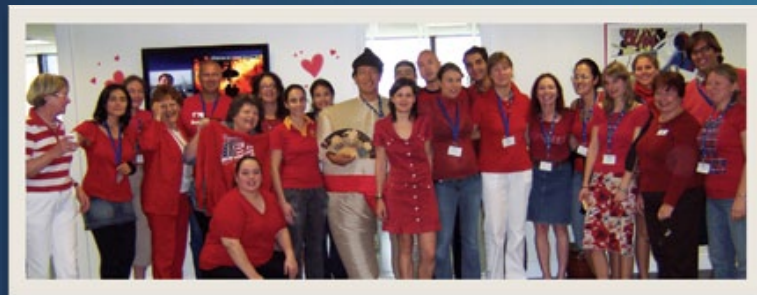


Ms. Georgenne Hart  
DIRECTOR  
OF LANGUAGE PROGRAMS

OUR GOAL is to help you make rapid progress in your practical English language skills development. Our outstanding team of highly qualified, passionate and experienced professional teachers will actively engage you and support you. Our lively and dynamic lessons will provide you with memorable moments of language learning and understanding of American culture and lifestyle.



**REPORTS & CERTIFICATES** At the end of your course you will receive a Certificate of Attendance provided you have attended classes regularly. This Certificate states the duration and level of study. Upon request, you may obtain from the Director of a signed report of attendance, course content and progress.



The Language Academy Certificate is awarded to any student who completes a course satisfactorily. The certificate is also based on continuous assessment of speaking and listening skills and the ability to communicate in everyday situations. The Language Academy Certificate will only be presented to those students who have attended at least 80% their classes.

## THE SCHOOL



### LOCATION

TLA is conveniently located in the heart of downtown Fort Lauderdale, only a short bus ride to the beach and within walking distance of the entertainment and restaurant district. TLA is near the Central Bus Terminal, Public Library and Fort Lauderdale Art Museum, as well as prestigious Las Olas Blvd with its cafes and boutique shopping.

### MEDIA CENTER

Our state-of-the-art Media Center includes computers, TV/VCRs, language learning software for individual and class use. Access to the Media Center is free and we encourage you to use the internet for your self-studies and to improve your language skills. The school also provides books and magazines for your reading development.

### COURSE LEVELS

There is a special curriculum for each level. Our weekly evaluation system allows you to move from one level to the next when you are ready. TLA offers 8 different levels.

#### COURSE LEVELS

- A1, A2, A3 = Beginner/Elementary
- B1, B2 = Intermediate
- C1 = High Intermediate
- C2 = Advanced
- D = Fluent

On your first day you will be interviewed by a senior teacher. Then we will administer a Michigan university placement test. You will be placed in a level corresponding to your test score and your communication skills. Classes meet in small groups with a maximum of 14 students. All classes are multinational and the "English only" policy provides you with the ideal learning environment.

## THE ENGLISH PROGRAMS

**TUITION FEES AND START DATES** Class hours and start times vary from course to course. Please request specific information upon registration. Make sure that you read carefully and review enrollment terms, conditions, holidays and start dates before applying.

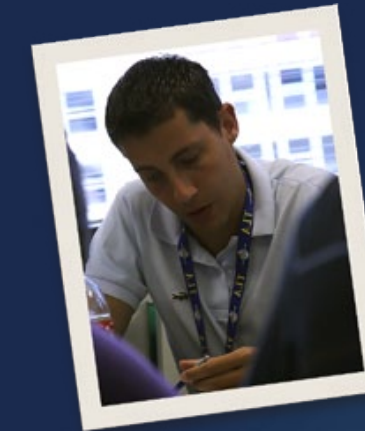
**GENERAL ENGLISH A & B** A complete program in grammar, reading, writing and speaking. The course provides a varied curriculum with emphasis on effective communication. Each group class has a maximum of 12 students. You can study a minimum of 2 weeks.

**GENERAL ENGLISH + PRIVATE LESSONS** The GEC & GED programs includes the General English group classes and 1 or 2 private lessons per day. Qualified teachers will work with you on your specific needs. Private lessons can be scheduled in the morning or in the afternoon.

**PRIVATE LESSONS** Private lessons may be added to any of the courses or can be taken separately. They are scheduled at your convenience and may be held at our academy or at your place of business.

**CAMBRIDGE EXAMS** The Cambridge First Certificate and the Certificate in Advanced English. The University of Cambridge examinations provide students with an internationally recognized qualification which is an assessment of all their skills in English. They are ideal for those who need English for further study in Europe or for work within the European Union. An intermediate or high-intermediate level of English is required for these courses.

\* Important note: Cambridge and TOEFL tests take place at official test centers which may be located in various parts of town. It is the student's responsibility to arrange transportation to these test centers.



## TEST PREPARATION



**TOEFL** (TEST OF ENGLISH AS A FOREIGN LANGUAGE)

TLA is an official IBT TOEFL Test Center

The TOEFL is a standardized test that evaluates the language proficiency of people whose native language is not English. If you are planning to study at an American college or university, you can take the course and sit the exam locally or in your own country. The course duration is of 4 weeks and an intermediate level of English is required.



**TOEIC** (TEST OF ENGLISH FOR INTERNATIONAL COMMUNICATION)

The TOEIC test is becoming widely recognized as a standard international test of English for the

business professional. Many international companies and airlines alike require the TOEIC certificate. This test is offered throughout the year. TLA has been an official TOEIC Test Center since 1998.

**COURSES FOR TEACHERS** If you teach or plan to teach English in your own country, you will be interested in our TEFL Courses. These courses will help you to improve and develop competence in practical language use and skills, refresh your knowledge of English and teach you new methods. Please ask for the special leaflet: "Teacher Training Course" for full details.



**TLA ENGLISH FOR EXECUTIVES** These unique courses are for the busy professionals and business people with only a limited amount of time available for language training. Before starting the course you will complete a special needs analysis which helps us to formulate a unique program tailored to your needs. You will practice your English by means of simulated business situations and role-play. Specific training is given in developing presentation and negotiating skills. Courses are offered for a minimum of one week. The maximum number of students in each executive class is 5. All executive courses have a minimum age requirement of 21 years.



**EXECUTIVE** A program that focuses on Business English, corporate language and the American business world.

**EXECUTIVE PLUS** In addition to the group program you will receive 5 private lessons where you can focus on your specific needs. The private lessons may be scheduled at your convenience.

**SUPER EXECUTIVE** The group program plus 10 private lessons. Monday through Friday. For tuition fees, dates and time, please refer to the tuition fees schedule.

## SPECIALTY COURSES

### ESP (English for Special Purposes)

TLA's ESP Programs have acquired an international reputation and are attended by professionals and business executives from all over the world.



- English For Finance
- English For Law
- English For Journalism
- English For Human Resources
- English For The Marine Industry
- English For The Medical Profession
- English For Marketing
- English For International Trade
- English For Executive Assistants
- English For The Agriculture and Food Industry

**ENGLISH FOR TOURISM** is a topical, practical course for participants working or interested in working in the tourism industry, as well as people who wish to use their English for travel. The special topics include terminology for travel agents and airlines, restaurants and hotel reservations, cancellations, etc. This program combines General English and travel related classes.

An intermediate level of English is required.



## ENGLISH YOUR KEY TO SUCCESS

**UNDERSTANDING AMERICA** Our Executive Programs will give you many chances to communicate with native-speakers of English. As part of the full immersion training, The Language Academy may provide you with the unique opportunity of meeting with business people and professionals who will give lectures on American culture and business topics and answer your questions. This will create a source of stimulating discussion subjects for you and your teachers and will open a new horizon in your understanding of American society and global trading.

**THE BEST CHOICE** TLA is accredited by ACCET (Accrediting Council for Continuing Education and Training), an agency recognized by the Department of Education. Institutions accredited by ACCET undergo a very strict review process, regarding financial, academic and ethical standards.



**A QUALITY SCHOOL** The IALC quality seal is a trusted symbol in language study abroad. All IALC language schools are regularly inspected and continuously monitored. IALC language schools are independently owned and managed. Each language school reflects the unique character of its location and country, and looks after its students with local pride and meticulous attention.

